

# MONTHLY MEMBERSHIP PROGRESS REPORT

LOCATION CALIFORNIA

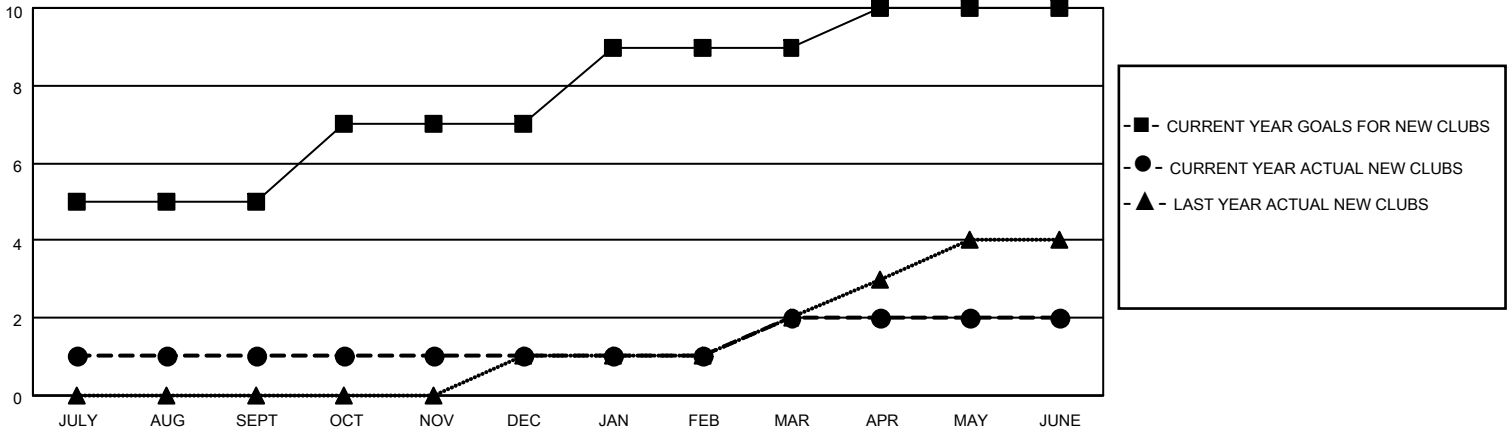
District 4 L2

Results as of: 6/30/2022

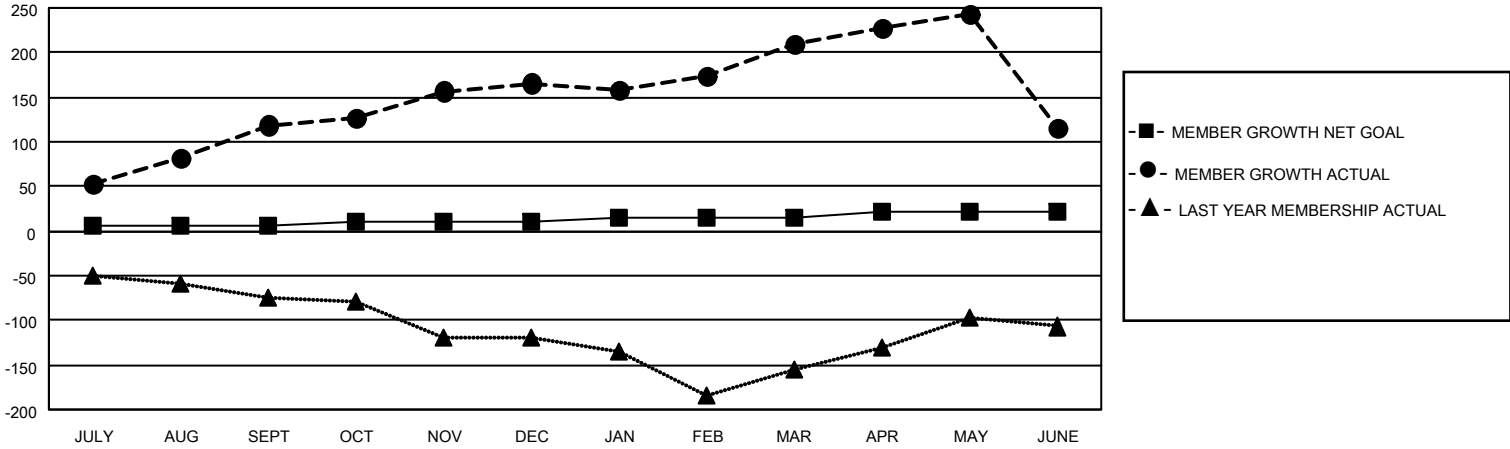
Clubs			
RESULTS FOR 2021-2022			
QUARTER	NEW CLUB GOAL	NEW CLUBS	DROPPED CLUBS
JULY/AUG/SEPT	5	1	1
OCT/NOV/DEC	2	0	0
JAN/FEB/MAR	2	1	0
APR/MAY/JUNE	1	0	2

Members			
RESULTS FOR 2021-2022			
QUARTER	MEMBER GROWTH NET GOAL	MEMBER GROWTH ACTUAL	DROPPED MEMBERS ACTUAL (including transfers)
JULY/AUG/SEPT	5	227	82
OCT/NOV/DEC	5	88	36
JAN/FEB/MAR	5	81	35
APR/MAY/JUNE	6	113	200

**GOALS AND ACTUAL NEW CLUBS CUMULATIVE**



**GOALS AND ACTUAL MEMBERS CUMULATIVE**



**DROPPED CLUBS: 3**

**34 CLUBS OF 53 ADDED 1 OR MORE NEW MEMBERS**

**GENDER DISTRIBUTION**

**DROPPED MEMBERS**

DECEASED	16
CLUB CANCELLED	47
OTHER	290
<b>TOTAL</b>	<b>353</b>

MALE	804 (54.73%)
FEMALE	663 (45.13%)
NON BINARY	1 (0.07%)
PREFER NOT TO ANSWER	1 (0.07%)

[CLICK HERE FOR CUMULATIVE MEMBERSHIP DATA](#)

TOTAL FAMILY UNIT MEMBERS	176
FAMILY MEMBERS PAYING HALF DUES	99